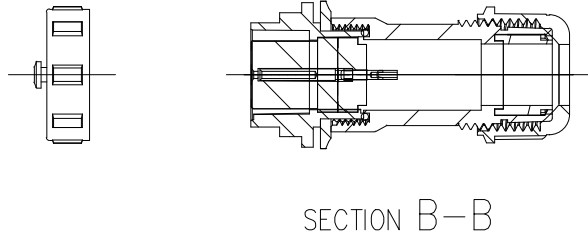
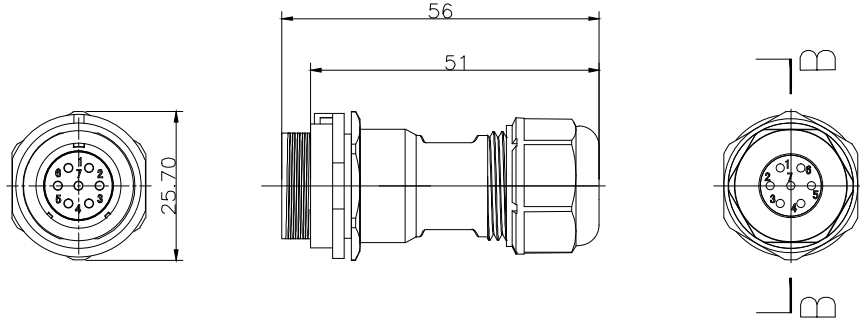


INT13-DP1711/S07



材料和技术参数 Material and spec

| 产品类型 | Product model | 连接器 | Connector |
|--------|----------------------------|---|----------------------------------|
| 接插方式 | Coupling | 螺纹锁紧 | Threaded |
| 外壳材料 | Shell material | 热塑材料 PP0, PA66 阻燃等级:V-0 | PP0, Nylon66 fire resistance:V-0 |
| 绝缘体 | Insert material | 热塑材料 PPS 耐高温 260°C | PPS man temperature 260°C |
| 接触件材料 | Contact material | 铜镀金 | Brass with gold plating |
| 接线方式 | Termination | INT13-DP17:焊接/压接 INT13-DP17:solder/crimp | |
| 电缆直径 | Cable outer diameter range | INT13-DP17A:6-10mm | |
| 防护等级 | IP rating | IP68 | |
| 接插次数 | Mating cycle | 500 times | |
| 温度范围 | Temperature range | -25 °C — +85 °C | |
| 绝缘电阻MΩ | Insulation resistance M | 2000 | |

焊接芯件芯数排列及技术特性表 Solder contact arrangement and spec

| 芯数 | Number of contact | 7 |
|--|-------------------|--------------|
| 插针绝缘体正面图 Male contact face view | | |
| 额定电流A Rated current (A) | | 5A |
| 接触件直径 Contact diameter | | 1.0*7 |
| 接线方式 Termination | | 焊接 solder |
| 工作电压(AC.V) Rated voltage(AC.V) | | 400V |
| 耐压(AC.V) 1 min Test voltage(AC.V) 1 min | | 1500V |
| 接触电阻 mΩ Contact resistance mΩ | | 5 |
| 线规 mm² /AWG Wire size solder mm² /AWG | | <0.785/18. |

INTE-AUTO

深圳市茵特电子科技有限公司
SHENZHEN INTE-AUTO CO.,LTD

COMPUTER NO.

INT13-DP17 PULG

UNIT

mm

SCALE

1:1

PART NAMF

INT13-DP1711/S07

APPD.

Lee

CKD.

LWJ

LZG

DATE

2024/6/1

TOLERANCE

.x ±0.05
.xx ±0.02

PART NO.

7Pin-Solder

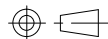
PEV

A0

MODEL

Waterproof
Connector

PAGE 1 OF 1



1

2

3

4

5

6

7

8