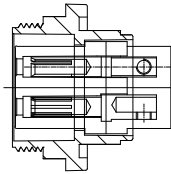
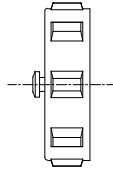
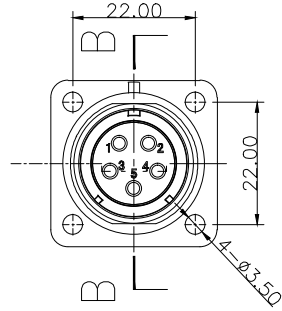
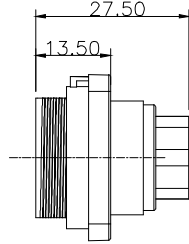
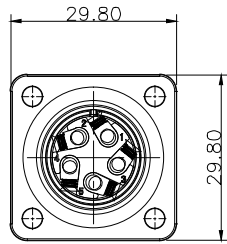
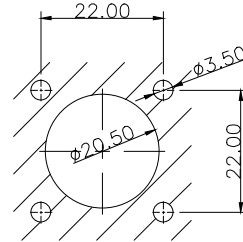


# INT13-FP2114/S053L



SECTION B-B



开孔尺寸

| REV | ZONE | REVISION | DATE |
|-----|------|----------|------|
|     |      |          |      |

## 材料和技术参数 Material and spec

| 产品类型   | Product model              | 连接器                | Connector  |
|--------|----------------------------|--------------------|--|
| 接插方式   | Coupling                   | 螺纹锁紧               | Threaded   |
| 外壳材料   | Shell material             | 热塑材料               | PPO, PA66 阻燃等级:V-0<br>PPO, Nylon66 fire resistance:V-0 |
| 绝缘体    | Insert material            | 热塑材料               | PPS 耐高温 260°C<br>PPS max temperature 260°C             |
| 接触件材料  | Contact material           | 铜镀金                | Brass with gold plating                                |
| 接线方式   | Termination                | INT13-FP21:焊接/压接   | INT13-FP21:solder/crimp                                |
| 电缆直径   | Cable outer diameter range | INT13-FP21B:7-12mm |  |
| 防护等级   | IP rating                  | IP68               |  |
| 接插次数   | Mating cycle               | 500 times          |  |
| 温度范围   | Temperature range          | -25 °C -- +85 °C   |  |
| 绝缘电阻MΩ | Insulation resistance M    | 2000               |  |

## 焊接芯件芯数排列及技术特性表 Solder contact arrangement and spec

|   |                         |
|---|-------------------------|
| 芯数<br>Number of contact   | 5C                      |
| 插针绝缘体正面图<br>Male contact face view  |                         |
| 额定电流A<br>Rated current (A)  | 15A                     |
| 接触件直径<br>Contact diameter   | 1.8*5                   |
| 接线方式<br>Termination   | 焊接/螺丝压接<br>solder/crimp |
| 工作电压(AC.V)<br>Rated voltage(AC.V)   | 500V                    |
| 耐压(AC.V) 1 min<br>Test voltage(AC.V) 1 min                                    | 1500V                   |
| 接触电阻 mΩ<br>Contact resistance mΩ  | 2.5                     |
| 线规 mm <sup>2</sup> /AWG<br>Wire size solder mm <sup>2</sup> /AWG              | < 2/14                  |
| 螺丝压接线规 mm <sup>2</sup> /AWG<br>Wire size for screw ceimp mm <sup>2</sup> /AWG |                         |



深圳市茵特电子科技有限公司  
SHENZHEN INTE-AUTO CO.,LTD

COMPUTER NO.

INT13-FP21 Receptacle

UNIT

mm

SCALE

1:1

PART NAMF

INT13-FP2114/S053L

APPD.

Lee

CKD.

LWJ

DATE

LZG

DATE

2024/6/1

TOLERANCE

.x ±0.05  
.xx ±0.02

PART NO.

5Pin-Screw

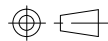
PEV

A0

MODEL

Waterproof Connector

PAGE 1 OF 1



1

2

3

4

5

6

7

8