

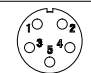
INT13-TP2110/P053

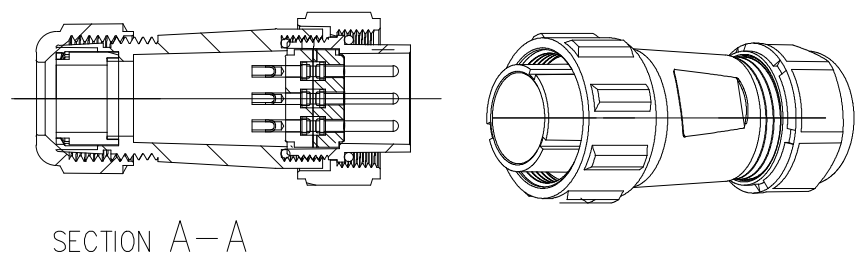
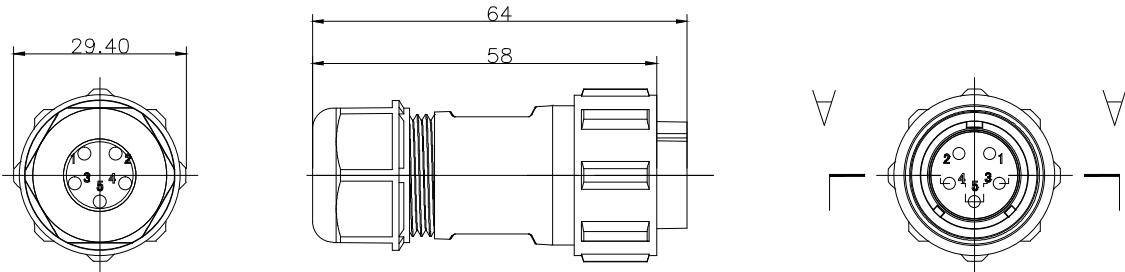
REV	ZONE	REVISION	DATE

材料和技术参数 Material and spec

产品类型	Product model	连接器	Connector
接插方式	Coupling	螺纹锁紧	Threaded
外壳材料	Shell material	热塑材料	PPO, PA66 阻燃等级:V-0 PPO, Nylon66 fire resistance:V-0
绝缘体	Insert material	热塑材料	PPS 耐高温 260°C PPS man temperature 260°C
接触件材料	Contact material	铜镀金	Brass with gold plating
接线方式	Termination	INT13-TP21:焊接/压接	INT13-TP21:solder/crimp
电缆直径	Cable outer diameter range	INT13-TP21B:7-12mm	
防护等级	IP rating	IP68	
接插次数	Mating cycle	500 times	
温度范围	Temperature range	-25 °C -- +85 °C	
绝缘电阻MΩ	Insulation resistance M	2000	

焊接芯件芯数排列及技术特性表 Solder contact arrangement and spec

芯数	Number of contact	5C
插针绝缘体正面图	Male contact face view	
额定电流A	Rated current (A)	15A
接触件直径	Contact diameter	1.8*5
接线方式	Termination	焊接/螺丝压接 solder/crimp
工作电压(AC.V)	Rated voltage(AC.V)	500V
耐压(AC.V) 1 min	Test voltage(AC.V) 1 min	1500V
接触电阻 mΩ	Contact resistance mΩ	2.5
线规 mm²/AWG	Wire size solder mm²/AWG	< 2/14 .
螺丝压接线规 mm²/AWG	Wire size for screw ceimp mm²/AWG	



深圳市茵特电子科技有限公司
SHENZHEN INTE-AUTO CO.,LTD

COMPUTER NO.

INT13-TP21 PULG

UNIT

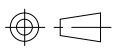
mm

SCALE

1:1

PART NAMF

INT13-TP2110/P053

MODEL	Waterproof Connector	PAGE 1 OF 1	
-------	----------------------	-------------	---

APPD.	CKD.	DATE	TOLERANCE	PART NO.	PEV
Lee	LWJ	LZG	2024/6/1	5Pin-Solder	A0

×	±0.05
.x	±0.05
.xx	±0.02