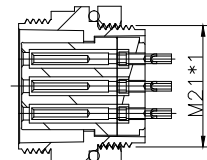
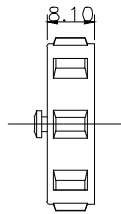
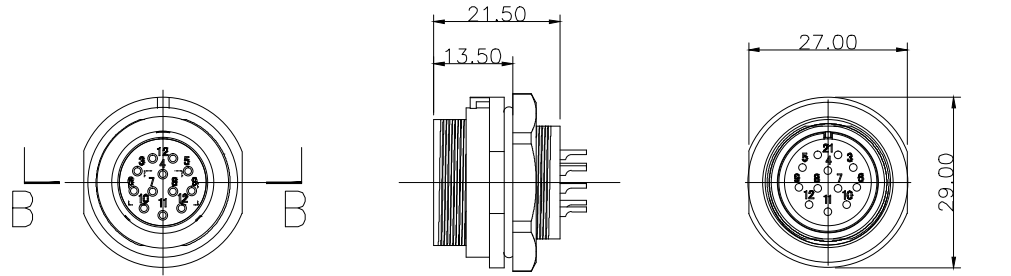
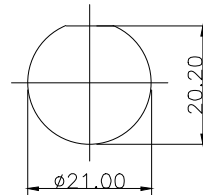


INT13-ZP2112/S12



SECTION B-B



开孔尺寸
机箱板最厚3.0

产品类型	Product model	连接器	Connector
接插方式	Coupling	螺纹锁紧	Threaded
外壳材料	Shell material	热塑材料	PP0, PA66 阻燃等级:V-0 PP0, Nylon66 fire resistance:V-0
绝缘体	Insert material	热塑材料	PPS 耐高温 260°C PPS max temperature 260°C
接触件材料	Contact material	铜镀金	Brass with gold plating
接线方式	Termination	INT13-ZP21:焊接/压接 INT13-ZP21:solder/crimp	
电缆直径	Cable outer diameter range	INT13-ZP21B:7-12mm	
防护等级	IP rating	IP68	
接插次数	Mating cycle	500 times	
温度范围	Temperature range	-25 °C — +85 °C	
绝缘电阻MΩ	Insulation resistance M	2000	

焊接芯件芯数排列及技术特性表 Solder contact arrangement and spec

芯数 Number of contact	12
插针绝缘体正面图 Male contact face view	
额定电流A Rated current (A)	5A
接触件直径 Contact diameter	1.0*12
接线方式 Termination	焊接 solder
工作电压 (AC.V) Rated voltage (AC.V)	400V
耐压 (AC.V) 1 min Test voltage (AC.V) 1 min	1500V
接触电阻 mΩ Contact resistance mΩ	5
线规 mm ² /AWG Wire size solder mm ² /AWG	<0.785/18
螺丝压接线规 mm ² /AWG Wire size for screw ceimp mm ² /AWG	

INTE-AUTO

深圳市茵特电子科技有限公司
SHENZHEN INTE-AUTO CO.,LTD

COMPUTER NO.

INT13-ZP21 Receptacle

UNIT

mm

SCALE

1:1

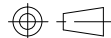
PART NAMF

INT13-ZP2112/S12

MODEL

Waterproof
Connector

PAGE 1 OF 1



Lee

LWJ

LZG

2024/6/1

TOLERANCE
× ±0.05
×× ±0.02

PART NO.

12Pin-Solder

PEV

A0